

*CITY OF NAPLES*  
*LIGHTING PLAN SET*  
*COLLIER COUNTY*

*1st AVE. S, 12th ST. S AND 10th ST. N STREETScape DESIGN*  
*PROJECT AND ENGINEERING SERVICES*

**INDEX OF LIGHTING PLANS**

SHEET NO.	SHEET DESCRIPTION
L-1	KEY SHEET
L-2	TABULATION OF QUANTITIES
L-3	SERVICE POINT DETAIL - FIXTURE SCHEDULE & NOTES
L-4	MANUFACTURER'S SPECIFICATION SHEET
L-5 TO L-6	POLE DATA AND LEGEND
L-7	GENERAL NOTES
L8	PLAN LAYOUT
L-9 TO L-12	LIGHTING PLANS

**PLANS PREPARED FOR:**

PAPE-DAWSON  
3800 VIA DEL REY  
BONITA SPRINGS, FL 34134  
O 239.947.1144 / C 239.405.4667

**GOVERNING STANDARD SPECIFICATIONS:**

Florida Department of Transportation, 2026-27 Standard Specifications for Road and Bridge Construction at the following website:

<http://www.fdot.gov/programmanagement/Implemented/SpecBooks>

**GOVERNING STANDARD PLANS:**

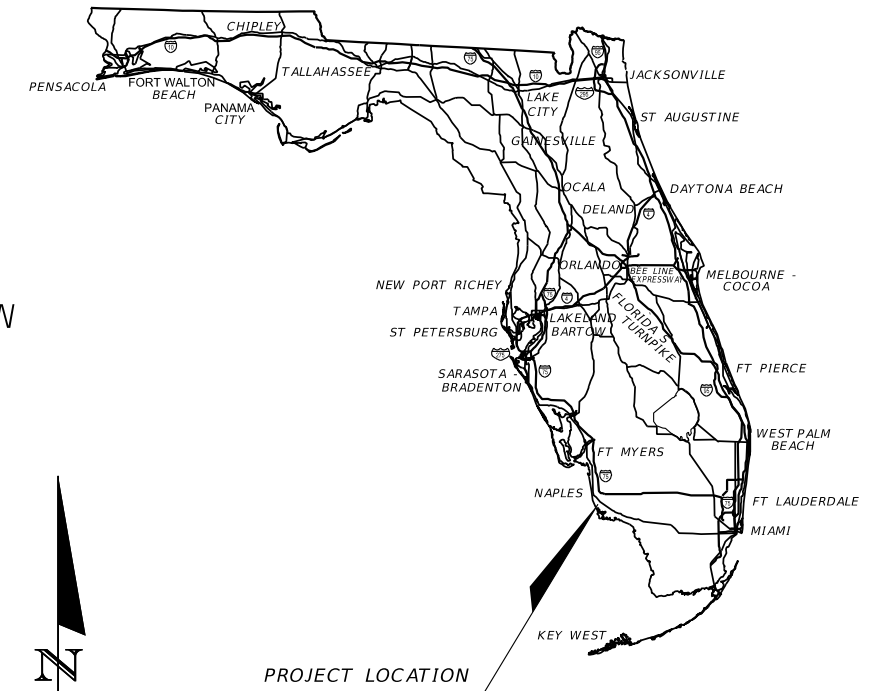
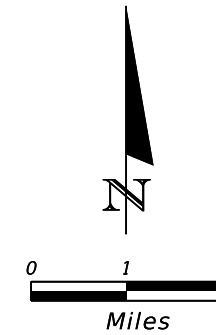
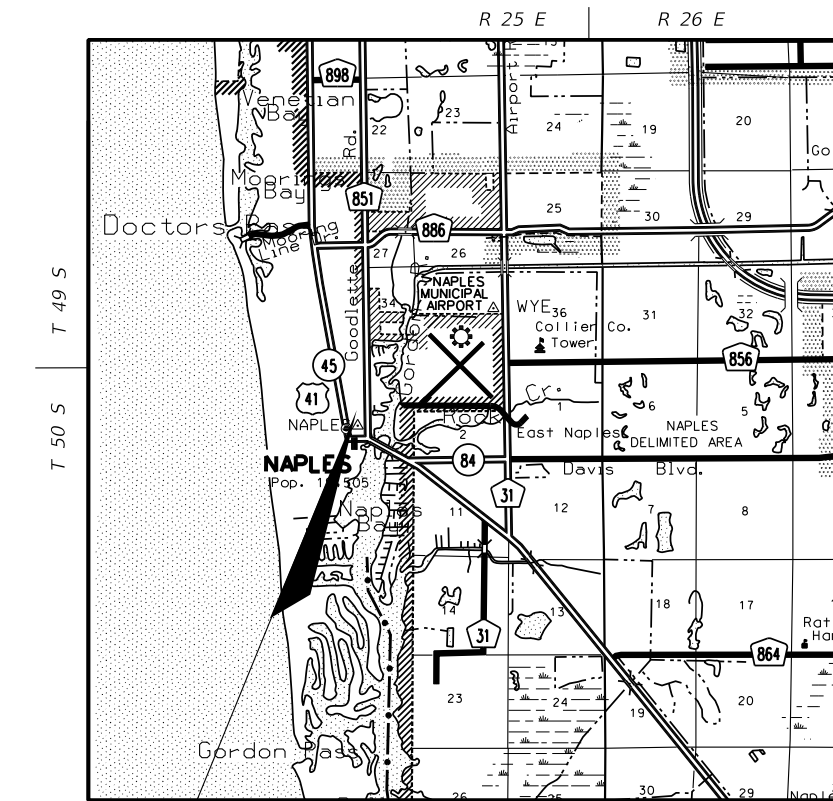
Florida Department of Transportation, FY2026-27 Standard Plans for Road and Bridge Construction and applicable Interim Revisions (IRs).

Standard Plans for Road Construction and associated IRs are available at the following website: <http://www.fdot.gov/design/standardplans>

APPLICABLE IRs: IR (NONE)

**GOVERNING STANDARD SPECIFICATIONS:**

Collier County Roadway Lighting Design Standards  
May 5th 2025.



**LIGHTING SHOP DRAWINGS TO BE SUBMITTED TO:**  
TREBILCOCK CONSULTING SOLUTIONS PA  
2800 DAVIS BLVD, SUIT 200,  
NAPLES, FL 34104

**PLANS PREPARED BY:**



2800 DAVIS BLVD SUITE 200 NAPLES FL 34104  
TREBILCOCK CONSULTING SOLUTIONS PA  
CERTIFICATE OF AUTHORIZATION No. 27796  
PHONE: 239 566 9551  
FAX: 239 566 9553

NOTE: THE SCALE OF THESE PLANS MAY HAVE CHANGED DUE TO REPRODUCTION.

PLANS ISSUED FOR 60% SUBMITTAL: 04.08.26

**LIGHTING PLAN ENGINEER OF RECORD:**  
DAVID A. DRATNOL PE No. 89796

KEY SHEET REVISIONS	
DATE	DESCRIPTION

FISCAL YEAR	SHEET NO.
25	L-1

# TABULATION OF QUANTITIES

PAY ITEM NO.	DESCRIPTION	UNIT	SHEET NUMBERS																				TOTAL THIS SHEET		GRAND TOTAL		REF. SHEET
			L-9		L-10		L-11		L-12																		
			PLAN	FINAL	PLAN	FINAL	PLAN	FINAL	PLAN	FINAL	PLAN	FINAL	PLAN	FINAL	PLAN	FINAL	PLAN	FINAL	PLAN	FINAL	PLAN	FINAL	PLAN	FINAL			
630-2-11	CONDUIT (FURNISH AND INSTALL) (OPEN TRENCH)	LF	2099		1290		1160		740															5,289			
630-2-12	CONDUIT (FURNISH AND INSTALL) (DIRECTIONAL BORE)	LF	187		205		285		273															950			
635-2-11	PULL AND SPLICE BOX (FURNISH AND INSTALL)	EA	7		7		13		9															36			
639-1-121	ELECTRICAL POWER SERVICE, F&I, UNDERGROUND, METER FURNISHED BY POWER COMPANY	AS	1		1		1		1															4			
639-2-1	ELECTRICAL SERVICE WIRE, (FURNISH & INSTALL)	LF	100		100		100		100															400			
715-1-12	LIGHTING CONDUCTOR (FURNISH AND INSTALL) INSULATED, No. 8-6	LF	7544		4934		4769		3343															20,590			
715-4-11	LIGHT POLE COMPLETE (FURNISH AND INSTALL)	EA	25		19		15		13															72			
																								0			

**PAY ITEMS NOTES:**

630-2-11:

ALL UNDERGROUND AND UNDER PAVEMENT CONDUIT SHALL BE SCHEDULE 40 PVC. THE CONDUIT SIZE SHALL BE AS SPECIFIED IN THE COLLIER COUNTY ROADWAY LIGHTING DESIGN STANDARDS DATED MAY 5th 2025. LENGTHS AS SHOWN IN THE PLANS.

635-2-11:

PULL & SPLICE BOXES WILL BE PER COLLIER COUNTY SIGNALIZATION TECHNICAL SPECIAL PROVISIONS DATED JANUARY, 2025. (TSP-23). THE COST OF THE CONCRETE APRON AROUND THE PULL BOX SHALL BE INCLUDED UNDER THE PULL BOX PAY ITEM.

DAVID A. DRATNOL, PE No. 89796  
TCS CERTIFICATE OF AUTHORIZATION No. 27796  
ISSUED FOR 100% SUBMITTAL: 04.08.26

REVISIONS						 <b>TREBILCOCK</b> CONSULTING SOLUTIONS <small>2800 DAVIS BLVD SUITE 200 NAPLES FL 34104</small>	<b>1st AVENUE SOUTH, 12th STREET SOUTH &amp; 10th STREET NORTH STREETScape LIGHTING PLAN</b>			<b>TABULATION OF QUANTITIES</b>	SHEET NO.  L-2
DATE	BY	DESCRIPTION	DATE	BY	DESCRIPTION		ROAD NO.	COUNTY	FINANCIAL PROJECT ID		
							COLLIER	- - -			

# LIGHTING FIXTURE SCHEDULE

MANUFACTURER	ORDER INFORMATION					
	QTY	LAMP	LUMINAIRE CATALOG NUMBER	VOLTAGE	MOUNTING	REMARKS
PEMCO	72	LED	NAP CR 80W 4K U TYPE 4	120-277V	POLE	DECORATIVE PEMCO (SINGLE) LUMINAIRE ON DECORATIVE ALUMINUM POLE. 13.5 FT MH MOUNTED ON CONCRETE FOUNDATION. FLAT LENS, FULL CUT-OFF, TYPE IV DISTRIBUTION, 4000 KELVIN COLOR TEMP, PEMCO POST TOP.

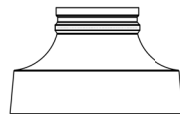
## PHOTOMETRIC STATISTICS

DESCRIPTION	SYMBOL	AVG	MAX	MIN	MAX/MIN	AVG/MIN
1 st Avenue S	+	1.3 fc	4.3 fc	0.5 fc	8.6:1	2.6:1
10 th Street N	+	1.5 fc	4.8 fc	0.5 fc	9.6:1	3.0:1
12 th Street S	+	1.8 fc	4.9 fc	0.5 fc	9.8:1	3.6:1

LIGHT LOSS FACTOR 1.0

**NOTE:**

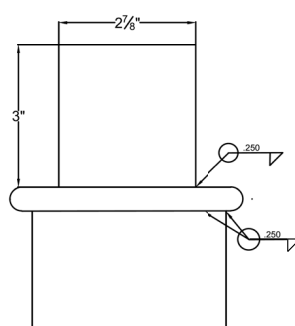
FATIGUE AND POLE VIBRATION ARE NOT CONSIDERED IN THE DESIGN. THE END USER'S MAINTENANCE PROGRAM SHOULD INCLUDE OBSERVATIONS FOR EXCESSIVE VIBRATIONS EXAMINATION FOR ANY STRUCTURAL DAMAGE OR BOLT LOOSENING.



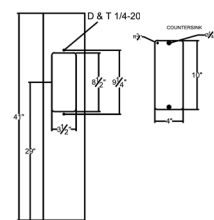
CAST BASE COVER

NP6040D12AB-TEN-BAN-15AMP			
NAPLES			
SIZE	REF PO NO.	DWG NO.	REV
SCALE	NTS	1 OF 1	7
S.O.		SHEET	1 OF 1

TOP TENON DETAIL



DOOR INSERT

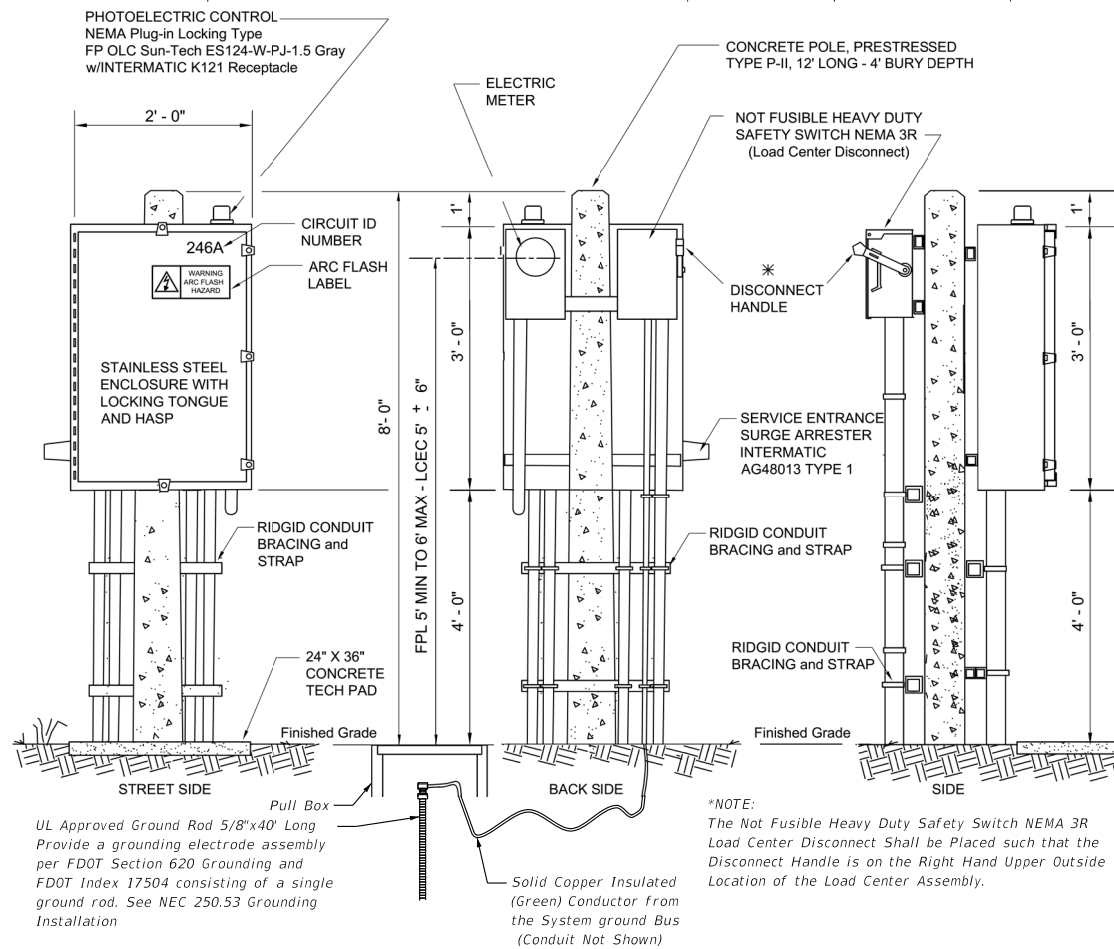


07 NOW HAS 6-1992 BASE	06/02/24
06 BANNER ARMS CHANGED 34 C-C	20/06/22
05 GFL BAN ARMS, 15 AMP REC	16/06/22
04 HAND HOLE NOW @ 30"	13/05/22
03 NOW HAS 18" BANNER ARMS	02/03/22
02 NOW HAS GFI	01/03/22
01 NOW HAS BANNER ARMS	28/02/22
REV	DATE
DRAWN RR	DATE 27/09/2021
APPROVED ON:	
SIGNATURE	

**SERVICE SPECIFICATIONS:**

- THE ENCLOSURE SHALL BE STAINLESS STEEL AND RAIN-TIGHT. THE ENCLOSURE DOOR SHALL BE LOCKABLE BY PADLOCK AND SHALL HAVE A CONTINUOUS HINGE ALONG LEFT SIDE. NO SCREWS TO BE USED TO ATTACH THE DOOR.
  - THE FPL/LCEC TRANSFORMER SHALL PROVIDE 240/480 VOLT, SINGLE PHASE, 2 WIRE SERVICE.
  - SERVICE PANEL SHALL INCLUDE THREE (3) POSITION POSITION OVERRIDE SWITCH FOR "ON, OFF, AND PHOTOCELLAUTOMATIC FOR "ON, OFF, & PHOTOCELL AUTOMATIC".
  - THE ENCLOSURE TO BE RIGIDLY ATTACHED TO THE POLE FACE.
  - A 600 VOLT SURGE ARRESTOR SHALL BE WIRED INSIDE THE ENCLOSURE.
  - ALL SERVICE EQUIPMENT SHALL BE U.L. APPROVED.
- NOTES:**
- A PULL BOX IS REQUIRED AT EACH SERVICE POINT.
  - ALL CONDUIT SHALL BE RIGID GALVANIZED METAL ON ALL ABOVE GROUND INSTALLATIONS.
  - IT SHALL BE THE CONTRACTORS RESPONSIBILITY TO PROVIDE A COMPLETE SERVICE ASSEMBLY AS PER THE PLANS AND SERVICE SPECIFICATIONS.
  - THE SERVICE INSTALLATION SHALL MEET THE REQUIREMENTS OF THE NATIONAL ELECTRIC CODE, APPLICABLE LOCAL CODES, AND FDOT STANDARD SPECIFICATIONS FOR ROAD AND BRIDGE CONSTRUCTION, LATEST EDITION.
  - ALL NEUTRAL WIRES TO HAVE WHITE INSULATION. DO NOT USE WHITE OR GREEN INSULATED WIRES FOR UNGROUNDED CONDUCTORS. HOT SHALL BE BLACK OR RED; GROUND SHALL BE GREEN.

See FPL electric service standards IV. Service and meter connections <http://www.fpl.com/partner/pdf/electric-service-standards-meter-connection.pdf> or LCEC self-contained meter socket details <http://www.lcec.net/pdf/ESMR-handbook.pdf>

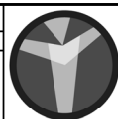


**SERVICE POINT DETAIL**  
NOT TO SCALE

DAVID A. DRATNOL, PE No. 89796  
TCS CERTIFICATE OF AUTHORIZATION No. 27796  
ISSUED FOR 100% SUBMITTAL: 04.08.26

REVISIONS

DATE	BY	DESCRIPTION	DATE	BY	DESCRIPTION



**TREBILCOCK**  
CONSULTING SOLUTIONS

2800 DAVIS BLVD SUITE 200 NAPLES FL 34104

**1st AVENUE SOUTH, 12th STREET SOUTH & 10th STREET NORTH STREETScape LIGHTING PLAN**

ROAD NO.	COUNTY	FINANCIAL PROJECT ID
	COLLIER	- - -

## SERVICE POINT DETAIL, FIXTURE SCHEDULE & NOTES

SHEET NO.

L-3

LED POST TOP LUMINAIRES



With Globe/Arcs

Fitter section slips over 3" or 2 1/4" pole or tenon



No Globe/No Arcs



Globe Only



No Globe/With Arcs

**Specifications and Features:**

**Radiant™ LED**

- Conformal Coating LED light engine
- CCT: Standard-3000K, 4000K, & 5000K
- 2700K, Amber, LPS (1800K) Offered for Some Wattages - Consult Factory
- Static Colors Available - Consult Factory

**Optical**

- Types I, II, III, IV, V (Type I Available in 70w & Higher Only)
- Full Cutoff

**Electrical**

- Electronic Driver, 120-277V, 50/60Hz or 347/480V, 50/60Hz
- 0-10V Dimmable Driver
- Standard Surge Protection Included (6kV Line-Line; 10kV Line-Earth)

**Controls (Optional)**

- Button Eye Photo Control (PC)

**Housing**

- Constructed of Cast Aluminum, and Features a Hinged Top for Access Into the Lamp Compartment, 3" Slip Fitter
- Optional Decorative Arcs are available as an adder.

**Finish**

- Super Durable Polyester Powder Coat Finish. Custom Finishes Available, Including Patinas and All RAL Colors.

**Listings & Ratings**

- ETL Listed to UL 1598 Standard for Wet Location and IP66.
- LED is IP66 Rated

**Warranty**

- 5 Year Limited Warranty



EPA: 2.4  
Weight: 38 lbs (Max.)

Order Information Example: NAPCA70W4KU3PCBK

Model	Globe/Lens	Wattage	CCT	Voltage	Optics	Options	Finish
NAP= Naples Post Top	CA=Clear Acrylic CP=Clear Polycarbonate FA=Frosted Acrylic FP=Frosted Polycarbonate CR=Clear Ribbed NL=No Secondary Lens L= No Secondary Lens with Soft LumaLens Opal UV-Stabilized Polycarbonate Array Lens* *105W & Above Only, Type V Model	40W=40w 50W=50w 60W=60w 70W=70w 80W=80w 90W=90w 105W=105w 120W=120w 135W=135w 155W=155w	3K=3000K 4K=4000K 5K=5000K	U=120/277V H=347/480V	1=Type I 2=Type II 3=Type III 4=Type IV 5=Type V *70W & Above Only	PC=Button Eye Photo Control DA=Decorative Arcs N=None	STANDARD FINISHES BK=Black BZ=Bronze DBZ=Dark Bronze WH=White GR=Green SM=Silver Metallic GY=Light Gray TBK=Textured Black CC=Custom Color (Consult Factory)

PEMCO Lighting Products Visit us at [www.pemcolighting.com](http://www.pemcolighting.com) • Phone: 302.892.9000

NAP

Specifications subject to change without notice. Rev. 030524

LED POST TOP LUMINAIRES

Photometric Data For Lensed Fixtures



13" Radiant™



12" Radiant™



8" Radiant™

**RADIANT™ LED LIGHT ENGINE SPECIFICATIONS:**

		Lumen Output for Naples With Clear, Frosted or Ribbed Lens										
Wattage (Catalog Logic)		40w (40W)	50w (50W)	60w (60W)	70w (70W)	80w (80W)	90w (90W)	105w (105W)	120w (120W)	135w (135W)	155w (155W)	
Radiant Size (DIA.)		8"	8"	8"	12"	12"	12"	13"	13"	13"	13"	
Input Watts		40.8	51.0	56.6	67.9	77.6	87.3	101.9	116.5	131.0	152.9	
Optic	CCT											
1 = Type I Clear, Frosted, or Ribbed Lens	3K	NOT AVAILABLE				8,165	9,331	10,498	12,248	13,997	15,747	18,080
	4K	NOT AVAILABLE				8,335	9,525	10,716	12,502	14,287	16,073	18,454
	5K	NOT AVAILABLE				8,461	9,670	10,879	12,692	14,506	16,318	18,736
	BUG Rating	B3-U3-G2	B3-U3-G2	B3-U3-G2	B3-U3-G2	B3-U3-G2	B3-U3-G2	B3-U3-G3	B3-U3-G3	B3-U3-G3	B3-U3-G3	B3-U3-G3
2 = Type II Clear, Frosted, or Ribbed Lens	3K	4,703	5,878	7,055	8,230	9,405	10,582	12,345	14,108	15,872	18,223	
	4K	4,800	6,001	7,200	8,401	9,600	10,801	12,601	14,400	16,200	18,601	
	5K	4,874	6,091	7,310	8,528	9,747	10,965	12,793	14,621	16,447	18,884	
	BUG Rating	B1-U3-G1	B1-U3-G1	B2-U3-G2	B2-U3-G2	B3-U3-G2	B2-U3-G2	B2-U3-G2	B2-U3-G2	B3-U3-G3	B3-U3-G3	B3-U3-G3
3 = Type III Clear, Frosted, or Ribbed Lens	3K	4,695	5,869	7,043	8,217	9,390	10,564	12,325	14,085	15,846	18,193	
	4K	4,792	5,991	7,188	8,387	9,584	10,783	12,580	14,377	16,174	18,570	
	5K	4,866	6,081	7,298	8,514	9,731	10,947	12,772	14,597	16,420	18,853	
	BUG Rating	B2-U3-G2	B2-U3-G2	B2-U3-G2	B2-U3-G2	B3-U3-G3	B3-U3-G3	B3-U3-G3	B3-U3-G3	B3-U3-G3	B3-U3-G3	B3-U3-G3
4 = Type IV Clear, Frosted, or Ribbed Lens	3K	4,591	5,739	6,887	8,034	9,182	10,330	12,052	13,773	15,495	17,791	
	4K	4,686	5,858	7,029	8,201	9,372	10,544	12,302	14,058	15,816	18,159	
	5K	4,758	5,947	7,136	8,326	9,515	10,705	12,489	14,274	16,057	18,436	
	BUG Rating	B1-U3-G2	B2-U3-G2	B2-U3-G2	B2-U3-G2	B2-U3-G3	B3-U3-G3	B3-U3-G3	B3-U3-G3	B3-U3-G3	B3-U3-G3	B3-U3-G3
5 = Type V Clear, Frosted, or Ribbed Lens	3K	4,804	6,005	7,207	8,407	9,608	10,809	12,610	14,412	16,213	18,615	
	4K	4,903	6,130	7,355	8,582	9,807	11,033	12,872	14,710	16,549	19,001	
	5K	4,979	6,222	7,467	8,712	9,956	11,201	13,068	14,935	16,801	19,291	
	BUG Rating	B3-U3-G1	B3-U3-G1	B3-U3-G2	B3-U3-G2	B3-U3-G2	B4-U3-G2	B4-U3-G2	B4-U3-G3	B4-U3-G3	B4-U3-G3	B4-U3-G3

Please refer to the fixture's IES file for detailed information. Subject to change.

PEMCO Lighting Products Visit us at [www.pemcolighting.com](http://www.pemcolighting.com) • Phone: 302.892.9000

NAP

Specifications subject to change without notice. Rev. 030524

DAVID A. DRATNOL, PE No. 89796

TCS CERTIFICATE OF AUTHORIZATION No. 27796

ISSUED FOR 100% SUBMITTAL: 04.08.26

REVISIONS					
DATE	BY	DESCRIPTION	DATE	BY	DESCRIPTION

**TREBILCOCK**  
CONSULTING SOLUTIONS  
2800 DAVIS BLVD SUITE 200 NAPLES FL 34104

1st AVENUE SOUTH, 12th STREET SOUTH & 10th STREET NORTH STREETScape LIGHTING PLAN		
ROAD NO.	COUNTY	FINANCIAL PROJECT ID
	COLLIER	- - -

MANUFACTURERS SPECIFICATION  
**SHEET**

SHEET NO.  
L-4





# LIGHTING GENERAL NOTES

1. PRIOR TO ANY EQUIPMENT ORDER, THE CONTRACTOR SHALL SUBMIT FOR APPROVAL BY TREBILCOCK CONSULTING SOLUTIONS, EQUIPMENT SPECIFICATIONS AND DESIGN DATA FOR ALL MATERIAL PROPOSED FOR THE PROJECT. THESE MUST SPECIFICALLY INCLUDE:

- A. LUMINAIRE SHOP DRAWINGS.
- B. POLE SHOP DRAWINGS.
- C. TRANSFORMER BASE SHOP DRAWINGS.
- D. FUSE HOLDERS, FUSES, FUSE NEUTRALS, SURGE ARRESTERS AND POLE CABLE DISTRIBUTION SYSTEMS.
- E. FOUNDATIONS.
- F. COPIES OF ALL MANUFACTURERS WARRANTIES.
- G. POLE STRENGTH CALCULATIONS, FRANGIBILITY TESTS, ANCHOR BOLT SPECIFICATIONS AND BOLT CIRCLE DIAMETER.
- H. ALL SHOP DRAWINGS SHALL BE IDENTIFIED WITH THE PROJECT ID AND SPECIFIC PAY ITEM NUMBER.

2. ELECTRICAL WORK SHALL MEET THE REQUIREMENTS OF THE LATEST EDITIONS OF THE NATIONAL ELECTRICAL CODE, THE STATE OF FLORIDA DEPARTMENT OF TRANSPORTATION DESIGN STANDARDS, THE STANDARD SPECIFICATIONS FOR ROAD AND BRIDGE CONSTRUCTION, THE COLLIER COUNTY DEPARTMENT OF TRANSPORTATION PLAN SPECIFICATIONS, AND CITY OF NAPLES SPECIFICATIONS AS APPLICABLE.

3. CONDUIT INSTALLATION PER FDOT STANDARD PLANS INDEX 630-001. CONDUIT ROUTING SHALL BE POLE TO POLE MAINTAINING POLE SETBACK DISTANCE FROM EDGE OF PAVEMENT.

4. CONDUIT THAT WILL REMAIN EMPTY AS SPARES SHALL BE MANDREL TESTED, CLEANED INSIDE AND BOTH ENDS CAPPED. INSTALL A CORROSION RESISTANT PULL/DRAW WIRE IN EACH CONDUIT AND TERMINATE IN PULL BOXES.

5. AT ALL PULL BOXES AND POLE BASES, ENDS OF CONDUIT SHALL BE A MINIMUM OF 2 INCHES ABOVE THE FOUNDATION AND SEALED IN ACCORDANCE WITH SECTION 630 OF THE STANDARD SPECIFICATIONS FOR ROAD AND BRIDGE CONSTRUCTION.

6. ANY PUBLIC LAND CORNER WITHIN THE LIMITS OF CONSTRUCTION IS TO BE PROTECTED. IF A CORNER MONUMENT IS IN DANGER OF BEING DAMAGED OR DESTROYED AND HAS NOT BEEN PROPERLY REFERENCED, THE CONTRACTOR SHALL NOTIFY THE DISTRICT LOCATION SURVEYOR WITHOUT DELAY BY TELEPHONE.

7. THE LOCATIONS OF EXISTING UTILITIES SHOWN ON THE PLANS ARE BASED ON LIMITED INVESTIGATION TECHNIQUES AND SHOULD BE CONSIDERED APPROXIMATE ONLY. VERIFIED LOCATIONS/ELEVATIONS APPLY ONLY AT THE POINTS SHOWN. INTERPOLATIONS BETWEEN THESE POINTS HAVE NOT BEEN VERIFIED.

8. CONTRACTOR SHALL VERIFY LOCATION OF PROPOSED UTILITIES, AND IRRIGATION SLEEVES PRIOR TO DRILLING POLE FOUNDATION. PROVIDE A MINIMUM 7.5 FT HORIZONTAL SEPARATION FROM EXISTING WATER AND SEWER MAINS. MINOR POLE LOCATION MODIFICATIONS MAY BE MADE BY CONTRACTOR IN THE FIELD TO AVOID CONFLICTS. MAJOR POLE LOCATION MODIFICATIONS SHALL BE APPROVED BY ENGINEER OF RECORD.

9. THE CONTRACTOR SHALL VERIFY IF OTHER UTILITIES (NOT SHOWN ON THE PLANS) EXIST WITH IN THE LIMITS OF CONSTRUCTION. SHOULD THERE BE UTILITY CONFLICTS, THE CONTRACTOR SHALL NOTIFY THE ENGINEER AND UTILITY OWNERS OF CONFLICTS AND/OR ADJUSTMENTS AS REQUIRED.

10. CONTRACTOR TO SUPPLY ENGINEERED FIXTURE, POLE AND FOUNDATION DESIGN SEALED BY FLORIDA STRUCTURAL ENGINEER TO THE REQUIRED DESIGN WIND SPEED.

11. SOD USED IN THE RESTORATION OF DISTURBED EARTH SHALL BE DUG-IN OR ROLLED AS REQUIRED TO MATCH THE EXISTING GRADE. ONE INCH OF WATER PER WEEK SHALL BE REQUIRED FOR A MINIMUM OF FOUR (4) CONSECUTIVE WEEKS FOR THE PURPOSE OF ESTABLISHING SOD. THIS CAN BE WAIVED DURING CONSTRUCTION, IF AND ONLY IF THERE IS A MINIMUM OF ONE INCH OF RAIN PER WEEK ON ALL SOD ON THE PROJECT.

12. BEFORE FINAL ACCEPTANCE, THE CONTRACTOR SHALL PROVIDE 2 SETS OF FULL SIZE AS-BUILT PLANS TO THE CITY OF NAPLES.

13. CONTRACTOR SHALL DETERMINE THE SERVICE-REQUIRED DATE FOR THE POWER COMPANY TRANSFORMER INSTALLATION AT THE PRE-CONSTRUCTION CONFERENCE.

14. CONTRACTOR SHALL BE RESPONSIBLE FOR AND MAINTAIN ALL LIGHTING COMPONENTS FOR A PERIOD OF ONE (1) YEAR AFTER FINAL ACCEPTANCE.

15. CONDUIT DEPICTED ON THE PLANS IS SCHEMATIC. NO OPEN CUTTING OF EXISTING PAVEMENT IS ALLOWED. CONDUIT SHALL BE DIRECTIONAL BORED UNDER PAVEMENT. CONDUITS MAY BE DIRECT BURIED IN UNPAVED AREAS, OR MAY NEED TO BE DIRECTIONAL BORED, AS APPLICABLE.

16. CONDUITS ABOVE GROUND SHALL BE RIGID GALVANIZED STEEL (RGS). RISER INTO UTILITY TRANSFORMER AND OTHER CONDUITS SHALL BE SCHEDULE 40 PVC UNLESS OTHERWISE SPECIFIED. SECONDARY CONDUIT SHALL BE BURIED AT 42" BELOW FINISH GRADE (BFG) WITH PLASTIC WARNING TAPE DIRECTLY ABOVE CONDUIT AT 24" BFG. ALL OTHER CONDUIT UNLESS OTHERWISE NOTED SHALL BE BURIED AT 36" BFG, MINIMUM.

17. FORTY (40) FEET 5/8" COPPER CLAD GROUND ROD SHALL BE DRIVEN AT EACH STREET LIGHT LOAD CENTER ELECTRIC SERVICE. TWENTY (20) FEET 5/8" COPPER CLAD GROUND ROD SHALL BE DRIVEN AT EACH LIGHT POLE LOCATION. CAD WELDING SHALL BE USED TO CONNECT GROUNDING WIRE TO GROUNDING RODS. FUSE HOLDERS (BUSSMAN TRON IN-LINE FUSE HOLDER WITH FNM 5 AMP SLOW BLOW FUSE (OR EQUAL), SURGE PROTECTORS (HUNT ENTERPRISES IN-LINE TYPE), OR EQUAL, AND GROUND RODS (5/8" X 10', COPPER CLAD, MEASURED 25 OHMS OR LESS RESISTANCE) SHALL BE PROVIDED AT EACH LIGHT POLE.

18. SIX (6) FT MINIMUM CLEAR ZONE FROM THE STREET LIGHT POLES TO THE EDGE OF PAVEMENT IS REQUIRED. TEN (10) FT MINIMUM CLEAR ZONE FROM THE STREETLIGHT POLES TO THE EDGE OF PAVEMENT WHERE THERE IS NO CURB. FOUR (4) FT MINIMUM CLEAR ZONE WHERE THERE IS RASIED CURB (FROM FACE OF CURB TO POLE FACE).

19. A #10 GROUND WIRE SHALL BE INSTALLED BETWEEN THE GROUND CONNECTIONS IN THE TRANSFORMER BASE AND THE STREET LIGHT LUMINAIRE.

20. FLORIDA POWER AND LIGHT COMPANY FURNISHES A 240 AND 480 VOLT 2-WIRE SYSTEM AS APPLICABLE. ALL CONDUCTORS SHALL BE COPPER, STRANDED WITH THN/THWN INSULATION. WIRE INSTALLED BETWEEN STREET LIGHT POLES SHALL NOT BE SPLICED IN PULL BOXES.

21. HANDHOLE COVERS AND TRANSFORMER BASES SHALL BE LOCATED OPPOSITE APPROACHING TRAFFIC.

22. CONDUIT INSTALLED UNDER PAVEMENT (DIRECTIONAL BORES) SHALL BE 2" SCHEDULE 80 HDPE, AS APPLICABLE.

23. PROVIDE AN ATTACHMENT POINT FOR THE ELECTRIC UTILITY COMPANY TO ATTACH TO IF INSTALLING AN OVERHEAD SERVICE POLE.

24. PULL BOXES SHALL BE PER COLLIER COUNTY AND CITY OF NAPLES STANDARDS AS APPLICABLE. PULL BOXES SHALL BE PROVIDED ON BOTH SIDES OF ROADWAY CROSSINGS. LIGHT POLE PULL BOXES MAY ALSO BE USED FOR PARALLEL CIRCUIT RUNS, AS APPLICABLE. PULL BOXES SHALL BE LABELED "STREET LIGHTS".

25. IDENTIFICATION PLATES SHALL BE INSTALLED ON ALL LIGHT POLES. PLATES SHALL CONTAIN THE FOLLOWING INFORMATION: POLE NUMBER AND CIRCUIT NUMBER AS SHOWN ON THE POLE DATA SHEET. IDENTIFICATION PLATES SHALL BE PLACED AT THE BACK OF THE POLE. COST IS INCIDENTAL TO THE LIGHT POLE PAY ITEM.

26. THE CONTRACTOR SHALL NOTIFY THE APPROPRIATE UTILITY OWNERS A MINIMUM OF 48 HOURS IN ADVANCE OF ANY EXCAVATION INVOLVING THEIR UTILITIES AND SCHEDULE A PRECONSTRUCTION MEETING PRIOR TO START OF CONSTRUCTION.

27. COORDINATE NEW PRIMARY CONDUIT ROUTING WITH FLORIDA POWER AND LIGHT (FPL). FPL CONTACT IS MICHAEL MARTINEZ AT 239 353 6047.

28. A SURGE ARRESTOR SHALL BE LOCATED AT AND BE READILY ACCESSIBLE IN EACH STREET LIGHTING POLE. SURGE ARRESTOR SHALL PROTECT BOTH THE GROUNDED AND UNGROUNDED CURRENT CARRYING CONDUCTORS. SURGE ARRESTORS SHALL BE EDC #SHA-4803 OR APPROVED EQUAL. SEE COLLIER COUNTY DEPARTMENT OF TRANSPARATION PLAN SPECIFICATIONS FOR BUSS BREAKAWAY REQUIREMENTS.

29. STREET LIGHTS SHALL BE CONTROLLED BY A HEAVY DUTY PHOTOELECTRIC CELL INSTALLED AT THE POWER SOURCE AS SPECIFIED IN THE RISER DIAGRAM LEGEND.

30. POLES SHALL BE INSTALLED IN ACCORDANCE WITH THE POLE MANUFACTURERS RECOMMENDATIONS. SHOP DRAWINGS SHALL BE SUBMITTED PRIOR TO POLE ORDERING AND INSTALLATION. CONTRACTOR OR POLE VENDOR SHALL FURNISH SIGNED AND SEALED CERTIFICATION FROM A FLORIDA REGISTERED STRUCTURAL ENGINEER STATING THAT POLES WITH SELECTED FIXTURES AND FOUNDATION WILL SATISFY CRITERION TO WITHSTAND WINDS OF 160 MPH WITH 1.3 GUST FACTOR. IN ACCORDANCE WITH ASCE 7-98. FDOT STANDARD PLANS MAYBE USED AS A DESIGN REFERENCE TO SATISFY THE WIND SPEED REQUIREMENTS, AS APPLICABLE.

31. EXISTING ROADWAY TRAFFIC SHALL BE ACCOMMODATED AND THE IMPLEMENTATION OF THE PROJECT MAINTENANCE OF TRAFFIC (MOT) PLAN SHALL BE IN ACCORDANCE WITH FLORIDA DEPARTMENT OF TRANSPORTATION (FDOT) ROADWAY AND TRAFFIC DESIGN STANDARDS LATEST EDITION. IN ADDITION, FDOT 102-600 SERIES INDEXES AND THE MANUAL ON UNIFORM TRAFFIC CONTROL DEVICES (MUTCD) FOR STREETS AND HIGHWAYS SHALL BE THE GOVERNING DESIGN AND IMPLEMENTATION DOCUMENTS. REFER TO FDOT INDEX NO. 102-600 FOR ADDITIONAL GENERAL INFORMATION. THE SIGN SPACINGS SHOWN IN THE FDOT INDEXES ARE TYPICAL (RECOMMENDED) DISTANCES. THESE DISTANCES MAY BE INCREASED OR DECREASED BASED ON FIELD CONDITIONS, IN ORDER TO AVOID CONFLICTS OR TO IMPROVE SITE-SPECIFIC TRAFFIC CONTROLS. THE WORK ZONE SPEED MAY REMAIN AS POSTED OR MAY BE REDUCED BY 10 MPH WITH APPROPRIATE POSTING AND APPROVAL IN WRITING.

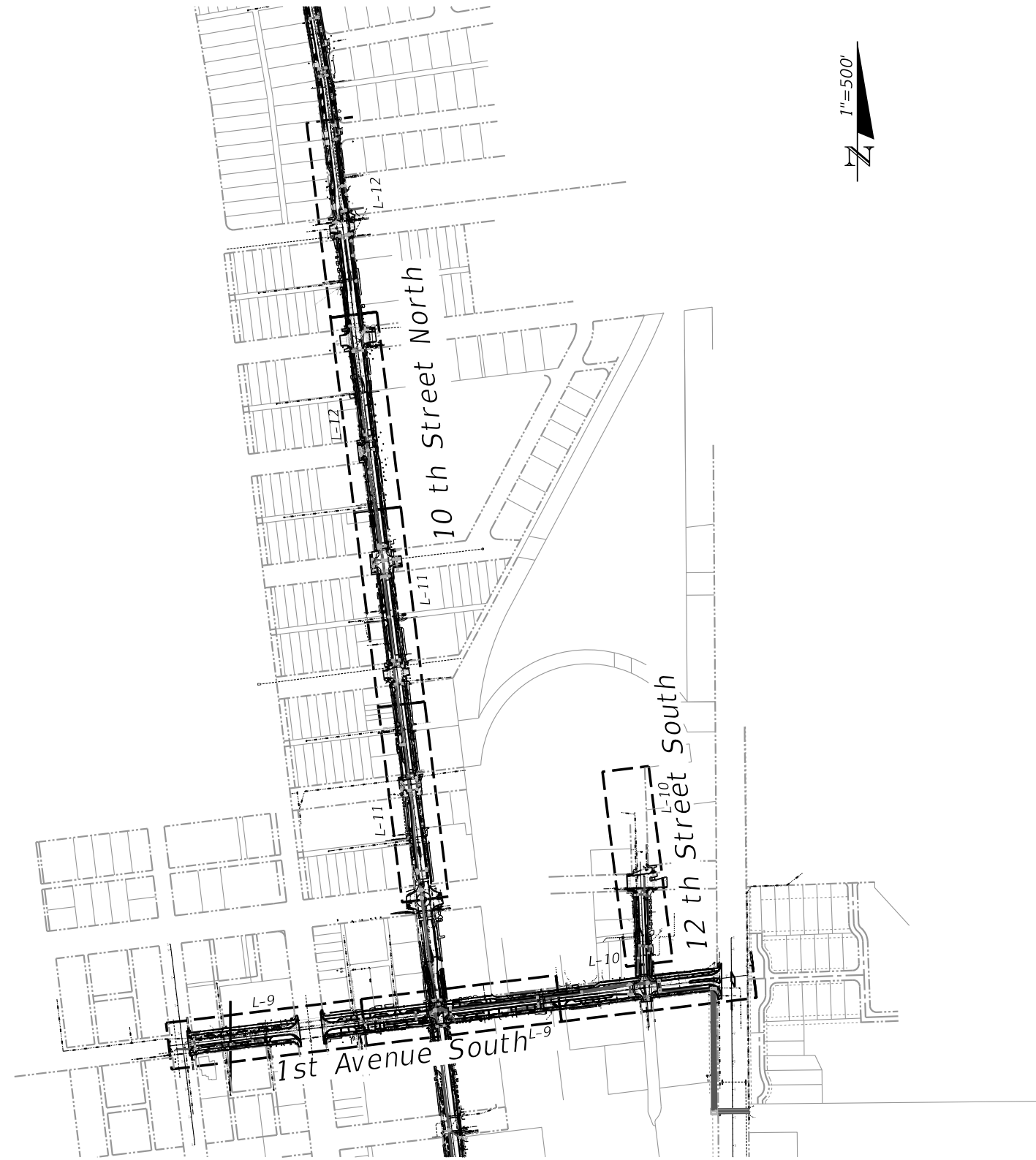
## UTILITY CONTACTS

UTILITY OWNER:	UTILITY TYPE	CONTACT:	TELEPHONE:
CENTURYLINK	FIBER, TELEPHONE	BILL MC CLOUD	850 815 3144
CITY OF NAPLES-SEWER	SEWER	ALICIA ACEVEDO	239 213 4712
CITY OF NAPLES-WATER	WATER	ALICIA ACEVEDO	239 213 4712
COLLIER COUNTY INFORMATION TECHNOLOGY (IT)	FIBER	JOE OLIVER	239 252 6205
COLLIER COUNTY TRAFFIC OPERATIONS SECTION	ELECTRIC , FIBER	PAM WILSON	239 252 8260
COMCAST	CATV	CHAD EVENER	941 356 1564
CROWN CASTLE NG	FIBER	FIBER DIG TEAM	800 654 3110
FLORIDA POWER & LIGHT-COLLIER	ELECTRIC	FPL CABLE LOCATION	EDGAR.AGUILAR@FPL.COM
HOTWIRE COMMUNICATIONS	CATV, FIBER, TELEPHONE	FERNANDO MORALES	954 296 7765
SUMMIT BROADBAND	FIBER, TELEPHONE	MICHELLE DANIEL	407 996 1183
TECO PEOPLES GAS	GAS	BRIANNA VELEZ	813 275 3700X8326
FORGED FIBER37 LLC	FIBER	ALEX HAYES	972 634 9652
PRIME FIBER	FIBER	CODY HANES	941 297 7373

DAVID A. DRATNOL, PE No. 89796  
TCS CERTIFICATE OF AUTHORIZATION No. 27796  
ISSUED FOR 100% SUBMITTAL: 04.08.26

REVISIONS						 2800 DAVIS BLVD SUITE 200 NAPLES FL 34104	1st AVENUE SOUTH, 12th STREET SOUTH & 10th STREET NORTH STREETScape LIGHTING PLAN	ROAD NO. COUNTY FINANCIAL PROJECT ID - - - COLLIER - - -	SHEET NO. L-7
DATE	BY	DESCRIPTION	DATE	BY	DESCRIPTION				
								<b>GENERAL NOTES</b>	

4/8/2026 1:17:09 AM  
 Z:\Operations\Projects\2\_City - Naples Govt\_TCS as Sub\1\_1AveS-12StS-10StN-ScapesDgn\_0.GWA-Prime\_10.16.23\5\_Lighting\Cad\_Files\Microstation\L8\_Plan\_Layout.dgn



DAVID A. DRATNOL, PE No. 89796  
 TCS CERTIFICATE OF AUTHORIZATION No. 27796  
 ISSUED FOR 100% SUBMITTAL: 04.08.26

REVISIONS					
DATE	BY	DESCRIPTION	DATE	BY	DESCRIPTION


**TREBILCOCK**  
 CONSULTING SOLUTIONS  
 2800 DAVIS BLVD SUITE 200 NAPLES FL 34104

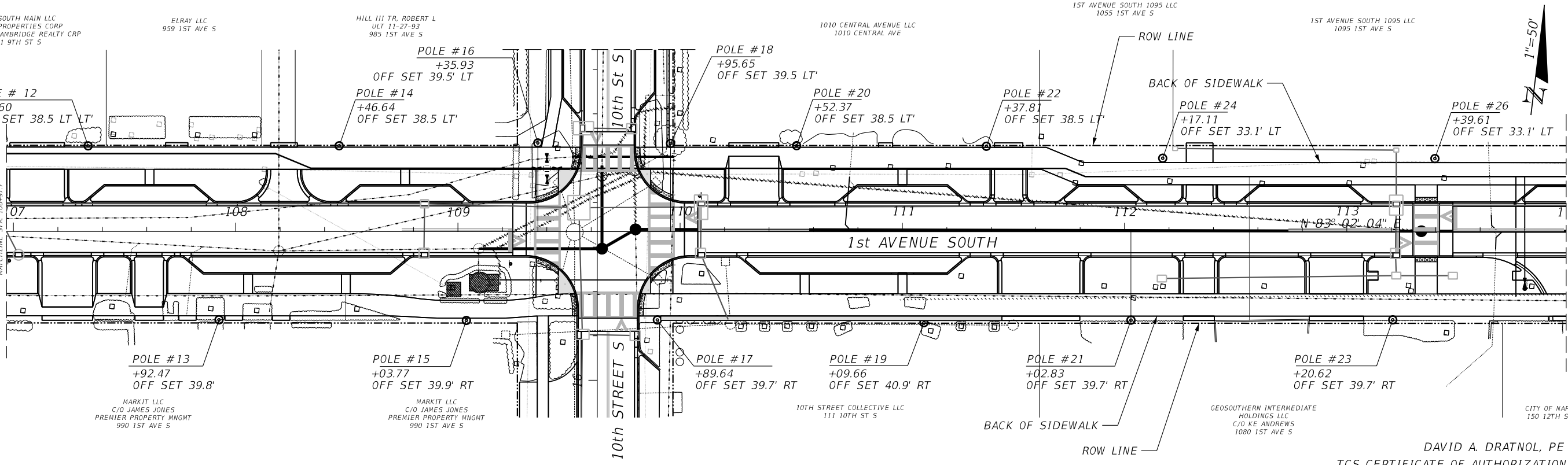
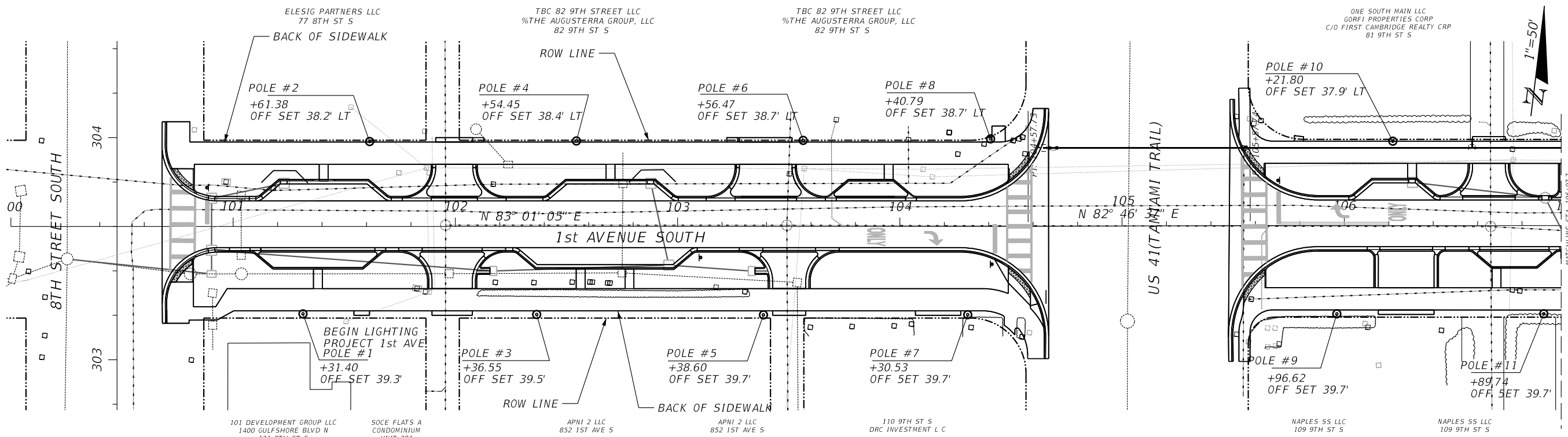
1st AVENUE SOUTH, 12th STREET SOUTH & 10th STREET NORTH STREETScape LIGHTING PLAN		
ROAD NO.	COUNTY	FINANCIAL PROJECT ID
	COLLIER	- - -

*PLAN LAYOUT*

SHEET NO.
L-8

NOTICE: THE OFFICIAL RECORD OF THIS SHEET IS THE ELECTRONIC FILE DIGITALLY SIGNED AND SEALED UNDER RULE 61G15-23.004, F.A.C.

4/8/2026 1:18:06 AM Z:\Operations\Projects\2\_City - Naples Govt\_TCS as Sub\1\_1AveS-125S-105N-ScapesDgn\_0.GWA-Prime\_10.16.23-5 Lighting\Cad Files\Microstation\9 Lighting Plan 1st Ave S1.dgn



DAVID A. DRATNOL, PE No. 89796  
TCS CERTIFICATE OF AUTHORIZATION No. 27796  
ISSUED FOR 100% SUBMITTAL: 04.08.26

REVISIONS					
DATE	BY	DESCRIPTION	DATE	BY	DESCRIPTION

**TREBILCOCK**  
CONSULTING SOLUTIONS  
2800 DAVIS BLVD SUITE 200 NAPLES FL 34104

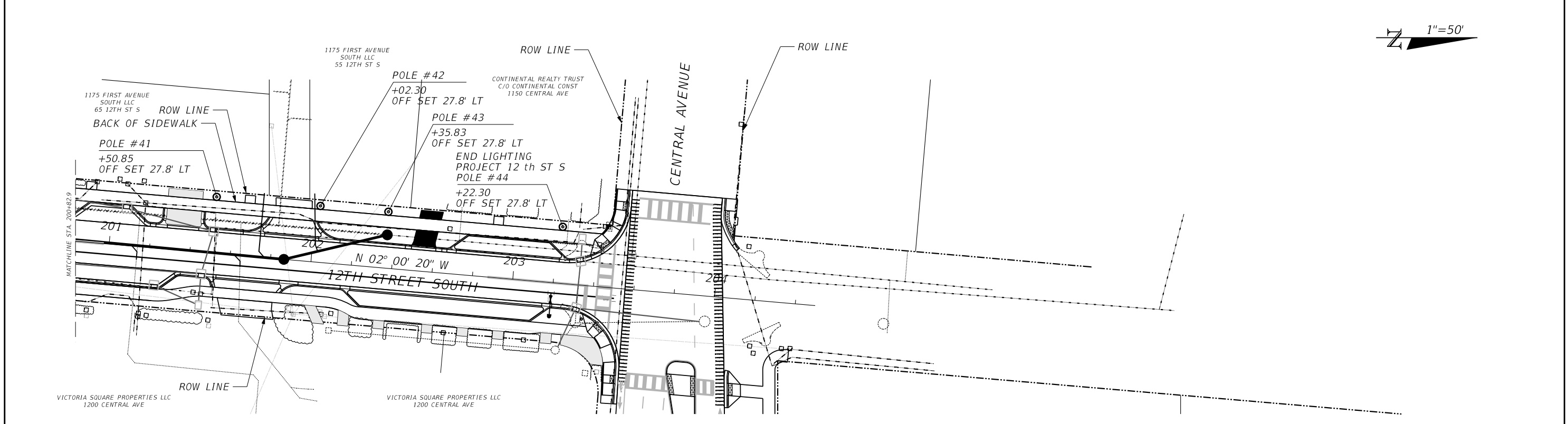
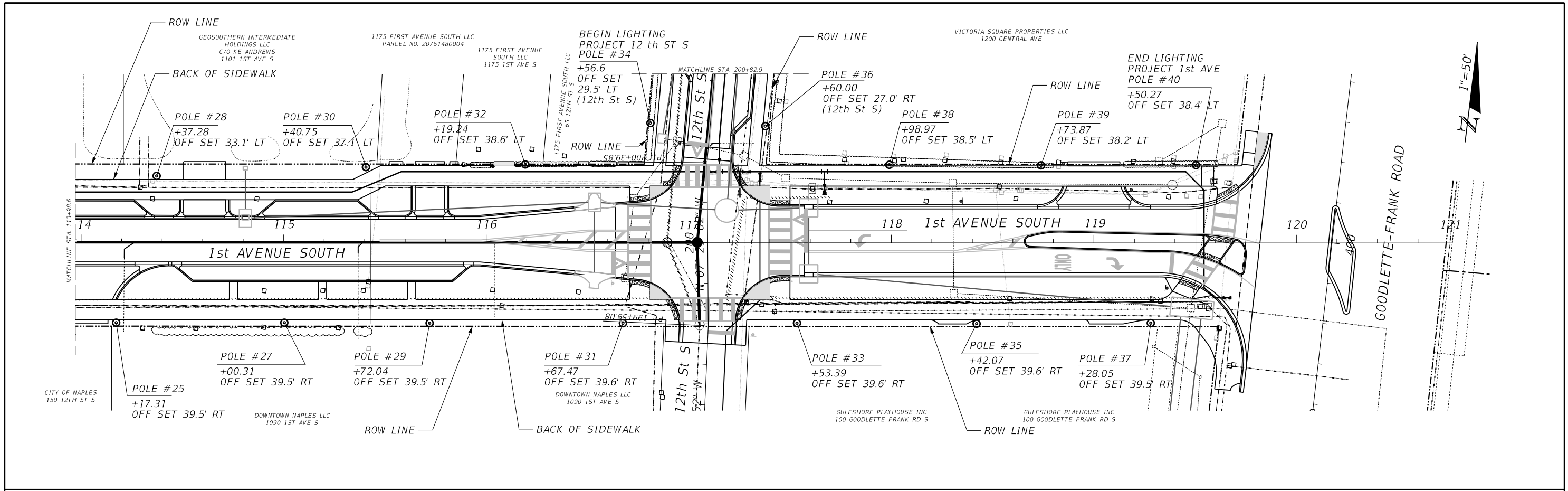
1st AVENUE SOUTH, 12th STREET SOUTH & 10th STREET NORTH STREETScape LIGHTING PLAN		
ROAD NO.	COUNTY	FINANCIAL PROJECT ID
	COLLIER	- - -

**LIGHTING PLAN**

SHEET NO.  
L-9

NOTICE: THE OFFICIAL RECORD OF THIS SHEET IS THE ELECTRONIC FILE DIGITALLY SIGNED AND SEALED UNDER RULE 61G15-23.004, F.A.C.

4/8/2026 1:19:04 AM Z:\Operations\Projects\2\_City - Naples Govt\_TCS as Sub\1\_1AveS-12StS-10StN-ScapesDgn\_0.GWA-Prime\_10.16.23\5\_Lighting\Cad Files\Microstation\L91\_Lighting Plan 1st Ave S2.dgn



DAVID A. DRATNOL, PE No. 89796  
TCS CERTIFICATE OF AUTHORIZATION No. 27796  
ISSUED FOR 100% SUBMITTAL: 04.08.26

REVISIONS					
DATE	BY	DESCRIPTION	DATE	BY	DESCRIPTION

**TREBILCOCK**  
CONSULTING SOLUTIONS  
2800 DAVIS BLVD SUITE 200 NAPLES FL 34104

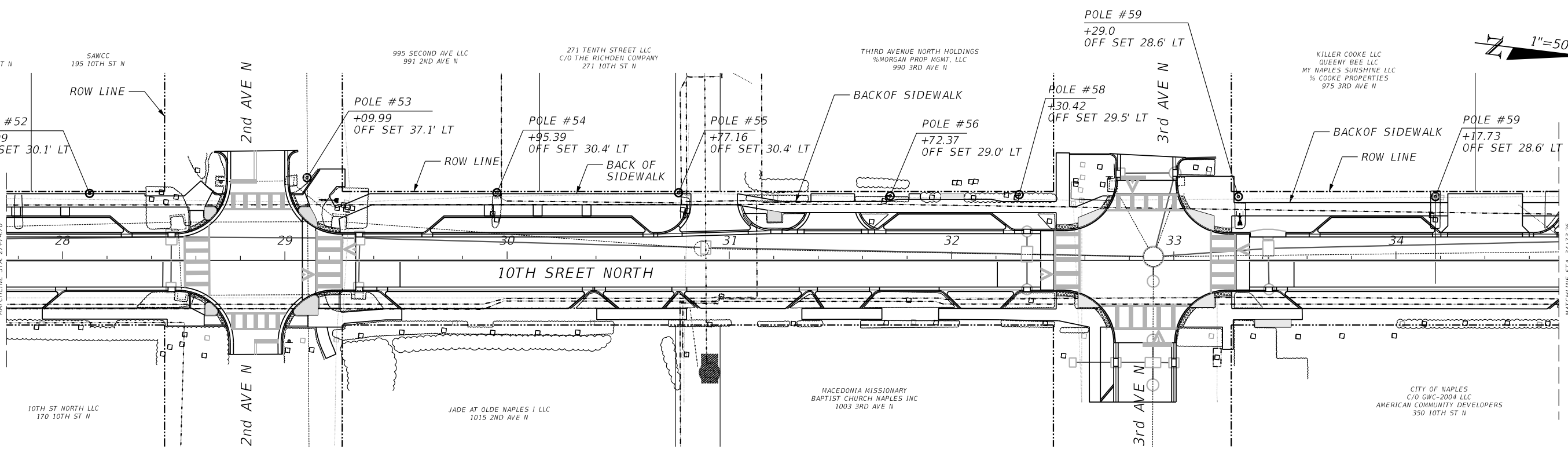
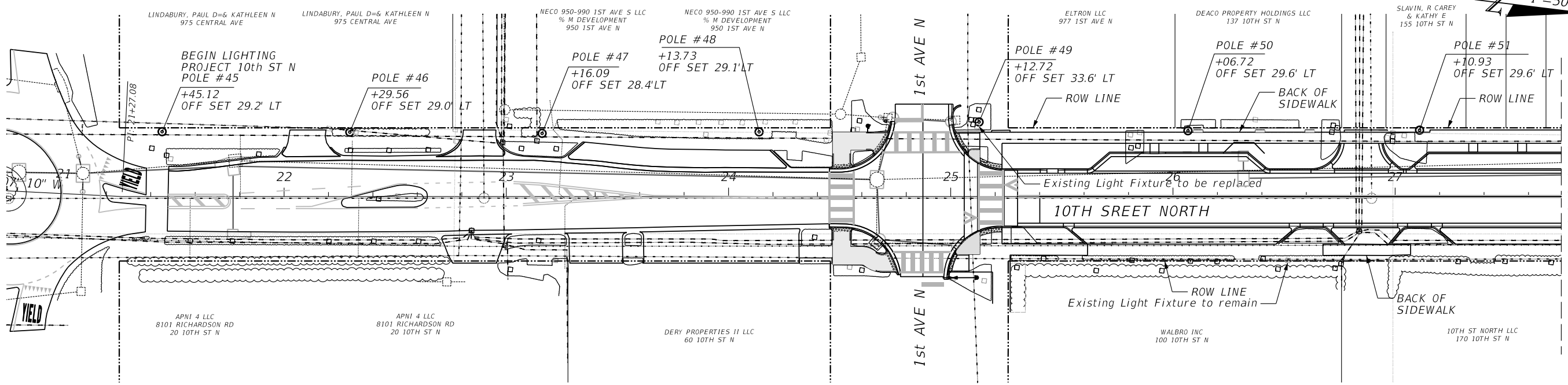
1st AVENUE SOUTH, 12th STREET SOUTH & 10th STREET NORTH STREETScape LIGHTING PLAN		
ROAD NO.	COUNTY	FINANCIAL PROJECT ID
	COLLIER	- - -

**LIGHTING PLAN**

SHEET NO.	L-10
-----------	------

NOTICE: THE OFFICIAL RECORD OF THIS SHEET IS THE ELECTRONIC FILE DIGITALLY SIGNED AND SEALED UNDER RULE 61G15-23.004, F.A.C.

SLAVIN, ROBERT C & KATHRYN E  
 SLAVIN, R CAREY & KATHY E  
 CAREY & KATHY E  
 KATHY E  
 161 10TH ST N



DAVID A. DRATNOL, PE No. 89796  
 TCS CERTIFICATE OF AUTHORIZATION No. 27796  
 ISSUED FOR 100% SUBMITTAL: 04.08.26

REVISIONS					
DATE	BY	DESCRIPTION	DATE	BY	DESCRIPTION

**TREBILCOCK**  
 CONSULTING SOLUTIONS  
 2800 DAVIS BLVD SUITE 200 NAPLES FL 34104

1st AVENUE SOUTH, 12th STREET SOUTH & 10th STREET NORTH STREETScape LIGHTING PLAN		
ROAD NO.	COUNTY	FINANCIAL PROJECT ID
	COLLIER	- - -

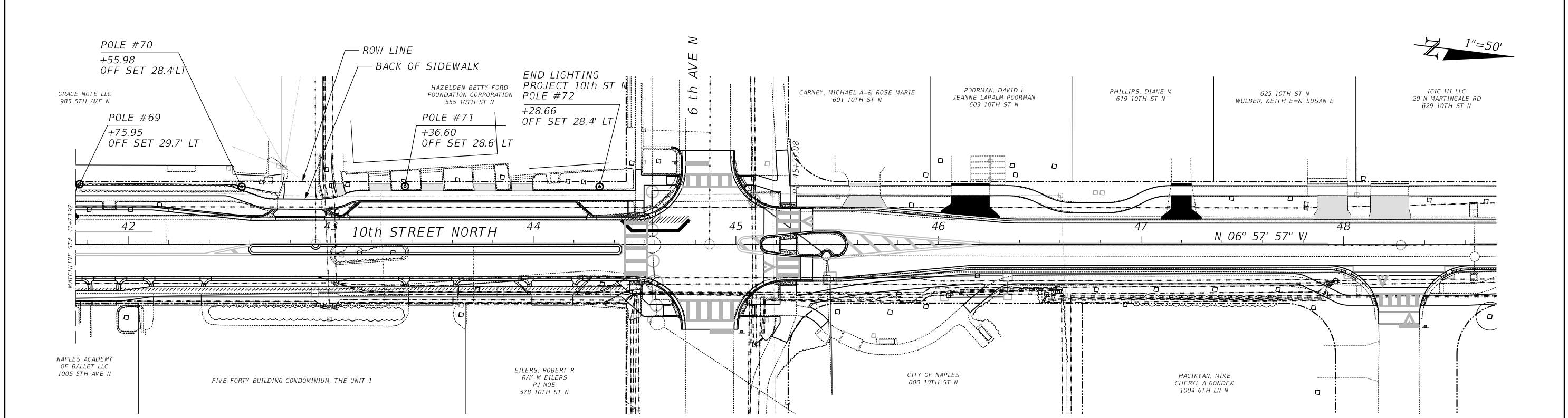
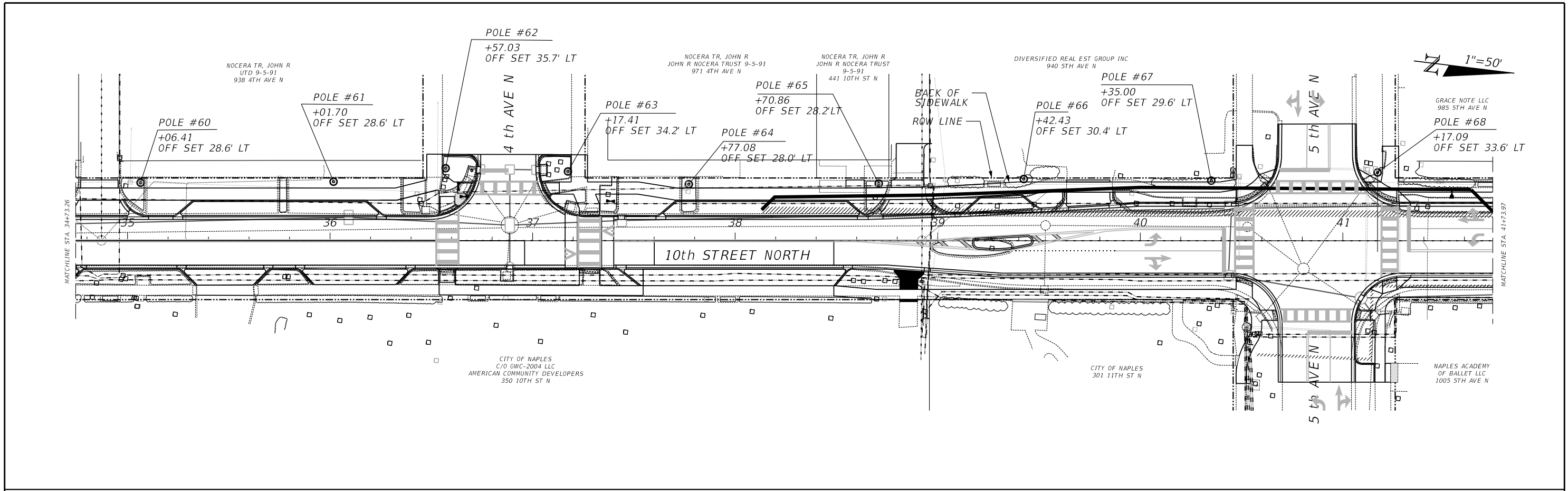
**LIGHTING PLAN**

SHEET NO.  
L-11

4/8/2026 1:19:54 AM Z:\Operations\Projects\2\_City - Naples Govt\_TCS as Sub\1\_1AveS-12StS-10StN-ScapesDgn\_0.GWA-Prime\_10.16.23\5\_Lighting\Cad Files\Microstation\92\_Lighting Plan 10th St. N.dgn

NOTICE: THE OFFICIAL RECORD OF THIS SHEET IS THE ELECTRONIC FILE DIGITALLY SIGNED AND SEALED UNDER RULE 61G15-23.004, F.A.C.

4/8/2026 1:21:04 AM Z:\Operations\Projects\2\_City - Naples Govt\_TCS as Sub\1\_1AveS-12StS-10StN-ScapesDgn\_0.GWA-Prime\_10.16.23\5\_Lighting\Cad Files\Microstation\L93\_Lighting Plan 10th St. N.dgn



DAVID A. DRATNOL, PE No. 89796  
TCS CERTIFICATE OF AUTHORIZATION No. 27796  
ISSUED FOR 100% SUBMITTAL: 04.08.26

REVISIONS					
DATE	BY	DESCRIPTION	DATE	BY	DESCRIPTION

**TREBILCOCK**  
CONSULTING SOLUTIONS  
2800 DAVIS BLVD SUITE 200 NAPLES FL 34104

1st AVENUE SOUTH, 12th STREET SOUTH & 10th STREET NORTH STREETScape LIGHTING PLAN		
ROAD NO.	COUNTY	FINANCIAL PROJECT ID
	COLLIER	- - -

**LIGHTING PLAN**

SHEET NO.  
L-12

NOTICE: THE OFFICIAL RECORD OF THIS SHEET IS THE ELECTRONIC FILE DIGITALLY SIGNED AND SEALED UNDER RULE 61G15-23.004, F.A.C.